



Swedish thinking. Better living.

Refrigeration

Nature provides.
We preserve





We protect food quality by delivering on the 3 key elements of preservation



1. Sealed environment

Maximum protection in
a sealed compartment
independent from the
rest of the fridge.



2. Stable temperature

Low temperate fluctuation
is a foundation in
protecting food quality.



3. Right humidity

High humidity environment
is preventing the fresh food
from drying out.



TasteSealFlex



The complete cooling solution

5 Pre-set Temperature

The TasteSealFlex convertible compartment gives you the freedom to store everything from fresh vegetables, to tender meat and fish, or cold drinks and ice-cream. You can always choose one of the preset temperatures (-23°C to 7°C) to keep your food fresh and full of flavour.

You can keep meat and fish fresh and tender for up to 7 days* by storing at -2°C, avoiding the need for inconvenient defrosting.

* Passed TUV Rheinland testing of microbiology plate count in salmon, chicken, and beef. Average weight loss <2% after 7 days. Sample tested EBB3702K.

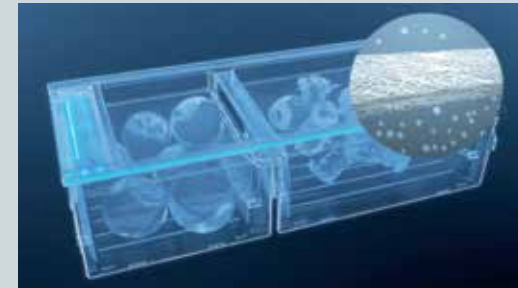
TasteLockAuto Crisper

Fresh fruit and veg, all week

TasteLockAuto Crisper keeps fruit and vegetables fresh for up to 7 days**.

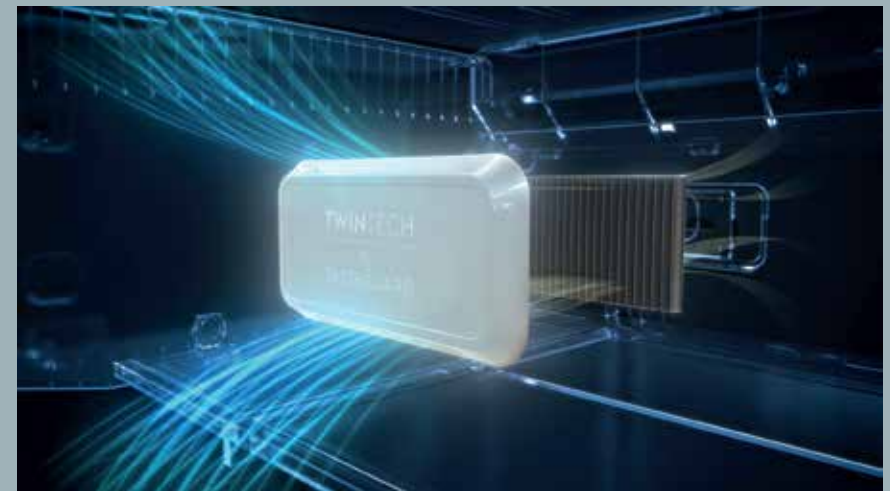
The **gasket sealing** and the **Auto Humidity control** remove excess moisture to reduce condensation, keeping your product fresher longer.

**Average food shrinkage after 7 days storage (model EQE6870BA): strawberry -3%, mushroom -18%, Carrot -5%, Lettuce -16%.



TasteGuard Deodoriser

Clean, hygienic storage



TasteGuard Odour removal filter with FACT technology eliminates bad odour caused by bacteria 9X faster ensuring that your refrigerator always remain fresh and hygienic.

FACT technology is made using various active carbon absorbents immobilised by fibrillated cellulose microfiber. An efficient solution to absorb VOC (Volatile Organic Compounds).

TwinTech Cooling

Optimal cooling, optimal taste

TwinTech® technology cools the fridge and freezer compartments separately with two independent cooling systems, creating an optimal environment for keeping food fresh longer and prevent mixing of unpleasant odour between the fridge and freezer.



Convention

Dries out food, reduce freshness, mix odour



TwinTech®

Keep food fresh longer, no unpleasant odour



SmartSplit Door Design

Minimise cool air escapes

SmartSplit door has 2 door openings mean you don't have to open both at the same time to access items, preventing cool air from escaping and maximising energy usage.

WaterStream with AutoIce

Ice and water on demand

Enjoy chilled water and crushed ice whenever you need a refreshing drink



FlexStor

Customisable door storage

FlexStor makes it simple and easy to store different size items with adjustable door shelves and bins.



Slide Back Shelf

Smart on space

The Slide Back shelf provides storage versatility to fit tall or large items such as two-tier birthday cake.

Flip Up Shelf

The height of convenience

The Flip Up shelf gives you the flexibility to adjust the shelving to fit extra tall items such as tall bottles.





UltimateTaste 900
Quattro French Door Refrigerator

EQE6879A-B 585L
Glossy Dark Grey

Overall dimensions

913W x 1782H x D749 (mm)

Features

- TasteSealFlex – 5 pre-set temp
- TasteLockAuto
- TasteGuard deodoriser
- TwinTech cooling
- Water & Ice dispenser
- FlexStor
- Flip-up shelf
- Slide-back shelf
- QuickChill, QuickFreeze
- Sabbath mode
- Soft door closing
- Water tank (750ml)



UltimateTaste 700
French Door Refrigerator

EHE5224B-A 474L
Arctic silver



Overall dimensions

796W x 1725H x 773D (mm)

Features

- TasteLockPlus
- AutoIce Maker
- EvenTemp
- ChillRoom
- TasteGuard deodoriser
- FlexStor
- NutriFresh inverter
- Door alarm

UltimateTaste 300
Three Door Refrigerator

EME3700H-A 337L
Arctic silver



Overall dimensions

598W x 1855H x 650D (mm)

Features

- TasteSealPlus -12°C to 3°C
- EvenTemp
- TasteGuard deodoriser
- TasteLock
- Twist and Serve ice maker
- FlexStor
- NutriFresh inverter
- Door alarm

UltimateTaste 700
Side by Side Refrigerator

ESE6101A-BSG 571L
Matt black



Overall dimensions

911W x 1780H x 706D (mm)

Features

- TasteLock
- TasteGuard deodoriser
- NutriFresh inverter
- EvenTemp
- Twist and Serve ice maker
- QuickChill
- QuickFreeze
- Door alarm
- Moveable ice tray and box
- Door alarm

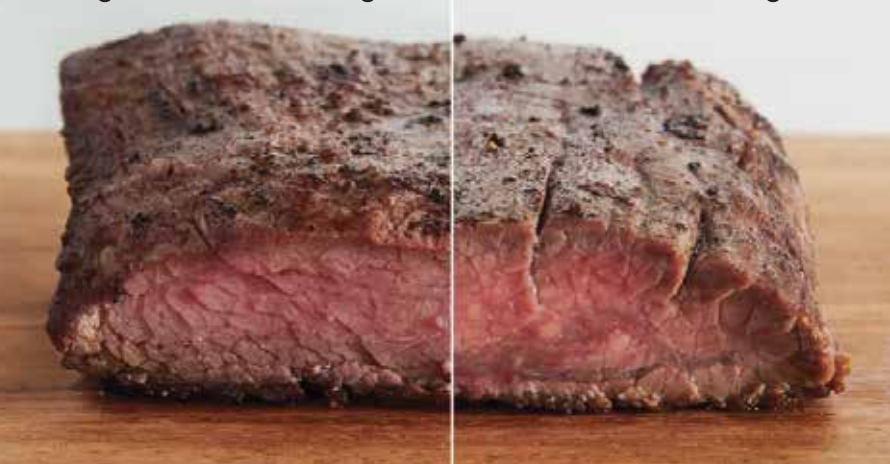


We protect food quality by delivering on the 3 key elements of preservation



Regular freezer storage

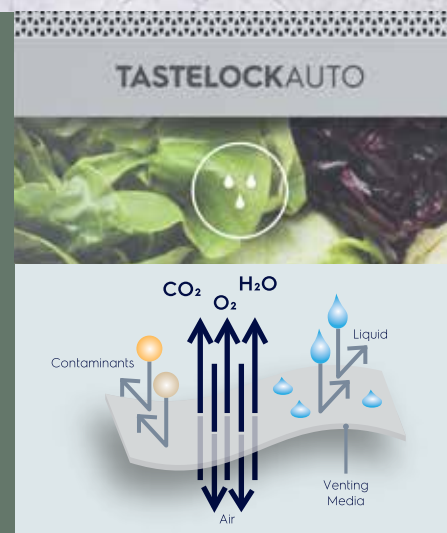
TasteSeal storage



Sealed environment

Tender meat and delicious seafood, always stored and cooked from fresh. The TasteSeal compartment maintains a consistent temperature of -2°C to keep your best ingredients in prime condition for up to 7 days* without freezing. This means that you can always cook from fresh to serve meat and seafood that is juicy in texture, bright in colour, and delicious in taste.

* Passed TUV Rheinland testing of microbiology plate count in salmon, chicken, and beef. Average weight loss <2% after 7 days. Sample tested EBB3702K.



Right humidity

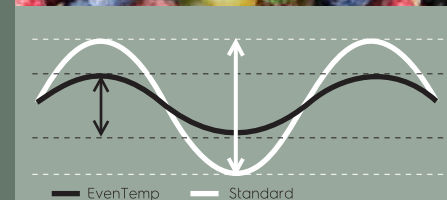
TasteLockAuto maintains a humid environment to keep fruits and vegetables fresh and bursting with flavour for up to 7 days.

This membrane is spun HDPE threads that are pressed to form a sheet which allows water vapour and gases to pass through



Stable temperature

EvenTemp keeps your food tasty for longer by minimising temperature fluctuations. By cooling each shelf individually, a consistent temperature is maintained throughout the entire compartment, preserving taste and texture for longer.



UltimateTaste 500
Top Freezer Refrigerator
Overall dimensions
Features
ETE5720B-A 537L
 Arctic silver

796W x 1825H x 727D (mm)

- TasteLockPlus
- EvenTemp
- ChillRoom
- TasteGuard deodoriser
- FlexStor
- NutriFresh inverter
- QuickChill
- AutoIce Maker
- Door alarm


UltimateTaste 300
Top Freezer Refrigerator
Overall dimensions
Features
ETB3740K-A 338L
 Arctic silver

598W x 1,756H x 650D (mm)

- TasteSeal -2°C
- TasteLockAuto
- Water dispenser
- EvenTemp
- TasteGuard deodoriser
- TasteSeal metal tray
- Twist and Serve ice maker
- NutriFresh inverter
- Door alarm


UltimateTaste 500
Top Freezer Refrigerator
Overall dimensions
Features
ETB4600B-A 431L
 Arctic silver

699W x 1725H x 730D (mm)

- TasteLockPlus
- EvenTemp
- ChillRoom
- TasteGuard deodoriser
- FlexStor
- NutriFresh inverter
- QuickChill
- Twist and Serve ice maker
- Door alarm


UltimateTaste 300
Top Freezer Refrigerator
Overall dimensions
Features
ETB3400K-A 310L
 Arctic silver

598W x 1645H x 650D (mm)

ETB3400K-H 310L
 High Gloss Black

598W x 1645H x 650D (mm)

- TasteSeal -2°C
- TasteLockAuto
- EvenTemp
- TasteGuard deodoriser
- TasteSeal metal tray
- Twist and Serve ice maker
- NutriFresh inverter
- Door alarm



**UltimateTaste 300
Top Freezer Refrigerator**
ETB2802J-A 255L
Arctic silver

Overall dimensions

540W x 1605H x 615D (mm)

Features

- TasteSeal -2°C
- TasteLock
- EvenTemp
- TasteGuard deodoriser
- Twist and Serve ice maker
- NutriFresh inverter
- FlexStor
- Door alarm

**UltimateTaste 500
Bottom Freezer Refrigerator**
EBE4500B-G 421L
Champagne gold

Overall dimensions

699W x 1725H x 723D (mm)

Features

- TasteLockPlus
- EvenTemp
- Spacious freezer
- TasteGuard deodoriser
- FlexStor
- NutriFresh inverter
- Twist and Serve ice maker
- QuickFreeze
- Door alarm

**UltimateTaste 300
Bottom Freezer Refrigerator**
EBB3742K-A 333L
Arctic silver

Overall dimensions

598W x 1756H x 650D (mm)

Features

- TasteSeal -2°C
- TasteLockAuto
- Water Dispenser
- EvenTemp
- TasteGuard deodoriser
- TasteSeal metal tray
- Twist and Serve ice maker
- NutriFresh inverter
- Door alarm

**UltimateTaste 300
Bottom Freezer Refrigerator**
EBB3402K-A 306L
Arctic silver

Overall dimensions

598W x 1646H x 650D (mm)

Features

- TasteSeal -2°C
- TasteLockAuto
- EvenTemp
- TasteGuard deodoriser
- TasteSeal metal tray
- Twist and Serve ice maker
- Spacious Freezer
- NutriFresh inverter
- Door alarm

UltimateTaste 300 Mini Bar Fridge

EUM0930BD 90L
Glossy Black



Overall dimensions

475W x 840H x 448D (mm)

Features

- Compact – ideal for bedroom or living area
- CoolZone for extra cold goods
- Deep door bin for big bottles
- 1 x Glass shelf
- 1 x Egg tray
- Reversible door*
- Mechanical control
- Manual defrost

UltimateTaste 300 Mini Bar Fridge

EUM0500BD 44L
Glossy Black



Overall dimensions

445W x 501H x 468D (mm)

Features

- Compact – ideal for bedroom or living area
- CoolZone for extra cold goods
- Deep door bin for big bottles
- 1 x Glass shelf
- Reversible door*
- Mechanical control
- Manual defrost

*Charges applicable for service of changing door opening



single door



EUM0500BD



EUM0930BD

top mount



ETB2802J-A



ETB3400K-A



ETB3400K-H



ETB3740K-A



ETB4600B-A



ETE5720B-A

specifications								
gross capacity (litres)	45L	94L	275	331	331	360	460	572
net capacity (litres)	44L	90L	255	310	310	338	431	537
fridge / freezer (litres)	44L	90L	193 / 62	237 / 73	237 / 73	265 / 73	329 / 102	403 / 134
door colour	glossy black	glossy black	arctic silver	arctic silver	high gloss black	arctic silver	arctic silver	arctic silver
door alarm			yes	yes	yes	yes	yes	yes
refrigerant		R600a	R600a	R600a	R600a	R600a	R600a	R600a
energy rating	3 ticks	4 ticks	2 ticks	2 ticks	2 ticks	2 ticks	3 ticks	3 ticks
fridge features								
chiller			TasteSeal	TasteSeal	TasteSeal	TasteSeal	Chill room	Chill room
crisper		crisper	TasteLock	TasteLockAuto	TasteLockAuto	TasteLockAuto	TasteLockPlus	TasteLockPlus
cooling system	direct cool	direct cool	EvenTemp	EvenTemp	EvenTemp	EvenTemp	EvenTemp	EvenTemp
inverter compressor			yes	yes	yes	yes	yes	yes
water dispenser						4L tank		
ice maker			Twist & serve	Twist & serve	Twist & serve	Twist & serve	Twist & serve	AutoIce
tasteguard			yes	yes	yes	yes	yes	yes
flexstor			yes				yes	yes
others								
product dimension (mm)	445W x 501H x 468D	475W x 842H x 446D	540W x 1605H x 615D	598W x 1645H x 650D	598W x 1645H x 650D	598W x 1756H x 650D	699W x 1725H x 730D	796W x 1825H x 727D

bottom mount



EBB3402K-H



EBB3742K-A



EBE4500B-G

multi-door



EME3700H-A



EHE5224B-A



EQE6879A-B

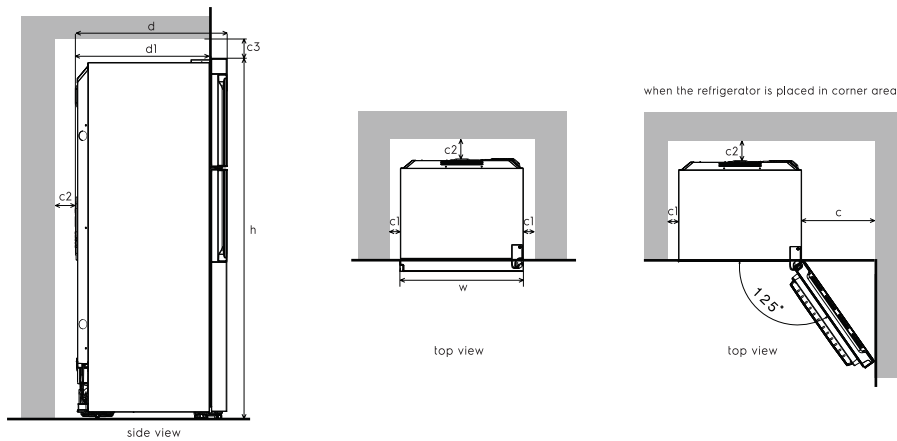
side by side



ESE6101A-BSG

specifications							
gross capacity (litres)	331	360	453	363	524	680	610
net capacity (litres)	306	333	421	337	491	585	571
fridge / freezer (litres)	222 / 84	249 / 84	296 / 125	210 / 52 / 75	346 / 145	363 / 222	381 / 190
door colour	arctic silver	arctic silver	champagne gold	arctic silver	arctic silver	glossy dark grey	matt black
door alarm	yes	yes	yes	yes	yes	yes	yes
refrigerant	R600a	R600a	R600a	R600a	R600a	R600a	R600a
energy rating	2 ticks	2 ticks	3 ticks	2 ticks	3 ticks	2 ticks	2 ticks
fridge features							
chiller	TasteSeal	TasteSeal	-	TasteSealPlus	Chill room	TasteSealFlex	
crisper	TasteLockAuto	TasteLockAuto	TasteLockPlus	TasteLock	TasteLockPlus	TasteLockAuto	TasteLock
cooling system	EvenTemp	EvenTemp	EvenTemp	EvenTemp	EvenTemp	TwinTech	EvenTemp
inverter compressor	yes	yes	yes	yes	yes	yes	yes
water dispenser		4L tank	-			750ml tank	
ice maker	Twist & serve	Twist & serve	Twist & serve	Twist & serve	AutoIce	AutoIce	Twist & serve
tasteguard	yes	yes	yes	yes	yes	yes	yes
flexstor			yes	yes	yes	yes	
others							
product dimension (mm)	598W x 1646H x 650D	598W x 1756H x 650D	699W x 1725H x 723D	598W x 1855H x 650D	796W x 1725H x 773D	913W x 1782H x 749D	911W x 1780H x 706D

Dimension



top mount

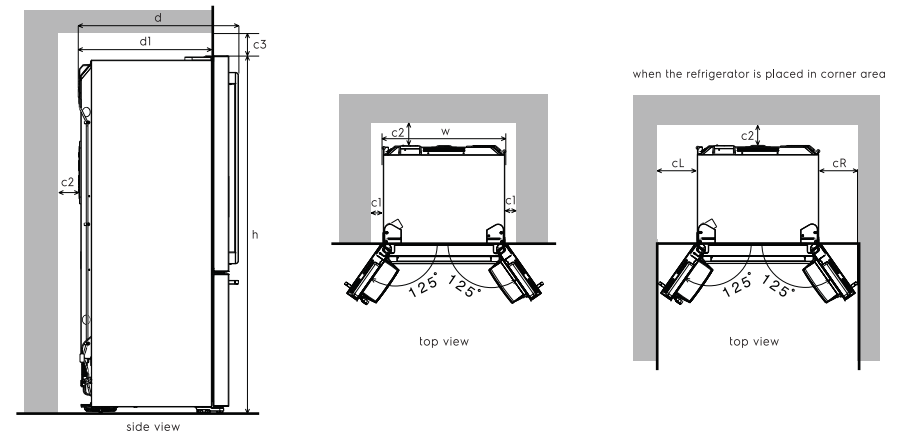
(in mm)	w	d	dl	h	c	c1	c2	c3
ETB2802J-A	540	615	540	1 605	350	30	50	90
ETB3400K-A / H	598	650	575	1,645	350	30	50	90
ETB3740K-A	598	650	575	1,756	350	30	50	90
ETB4600B-A	699	730	641	1,725	350	30	50	90
ETE5720B-A	796	727	641	1,825	350	30	50	90

bottom mount

(in mm)	w	d	dl	h	c	c1	c2	c3
EBB3402K-A	598	650	575	1,646	350	30	50	90
EBB3742K-A	598	650	575	1,756	350	30	50	90
EBE4500B-G	699	723	641	1,725	350	30	50	90

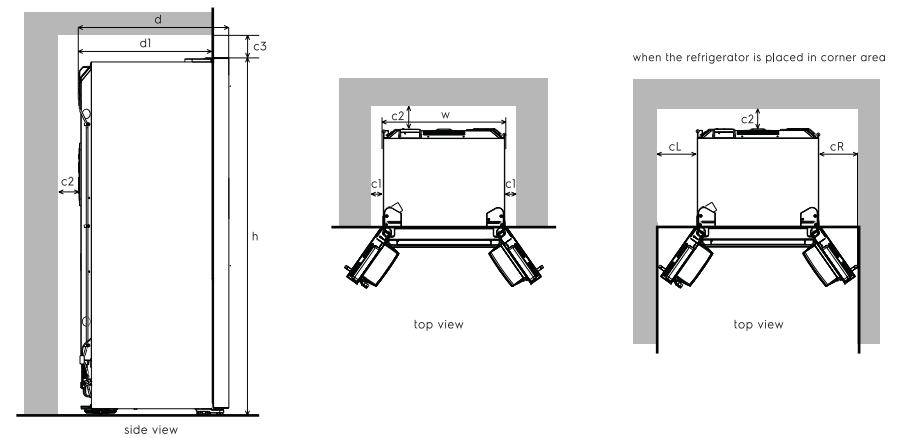
multi door

(in mm)	w	d	dl	h	c	c1	c2	c3
EME3700H-A	598	650	575	1,855	350	30	50	90



multi door

(in mm)	w	d	dl	h	cL	cR	c1	c2	c3
EHE5224B-A	796	773	641	1,725	350	350	30	50	90
EQE6879A-B	913	749	632	1,782	219	310	10	35	25



side by side

(in mm)	w	d	dl	h	cL	cR	c1	c2	c3
ESE6101A-BSG	911	706	-	1,780	350	430	30	50	90



Electrolux S.E.A Pte Ltd

address: 351 Braddell Road, #01-04,
Singapore 579713
telephone: (+65) 6727 3699
website: electrolux.com.sg
e-mail: customer-care.sin@electrolux.com
facebook: facebook.com/ElectroluxSingapore
instagram: instagram.com/electrolux_singapore

